



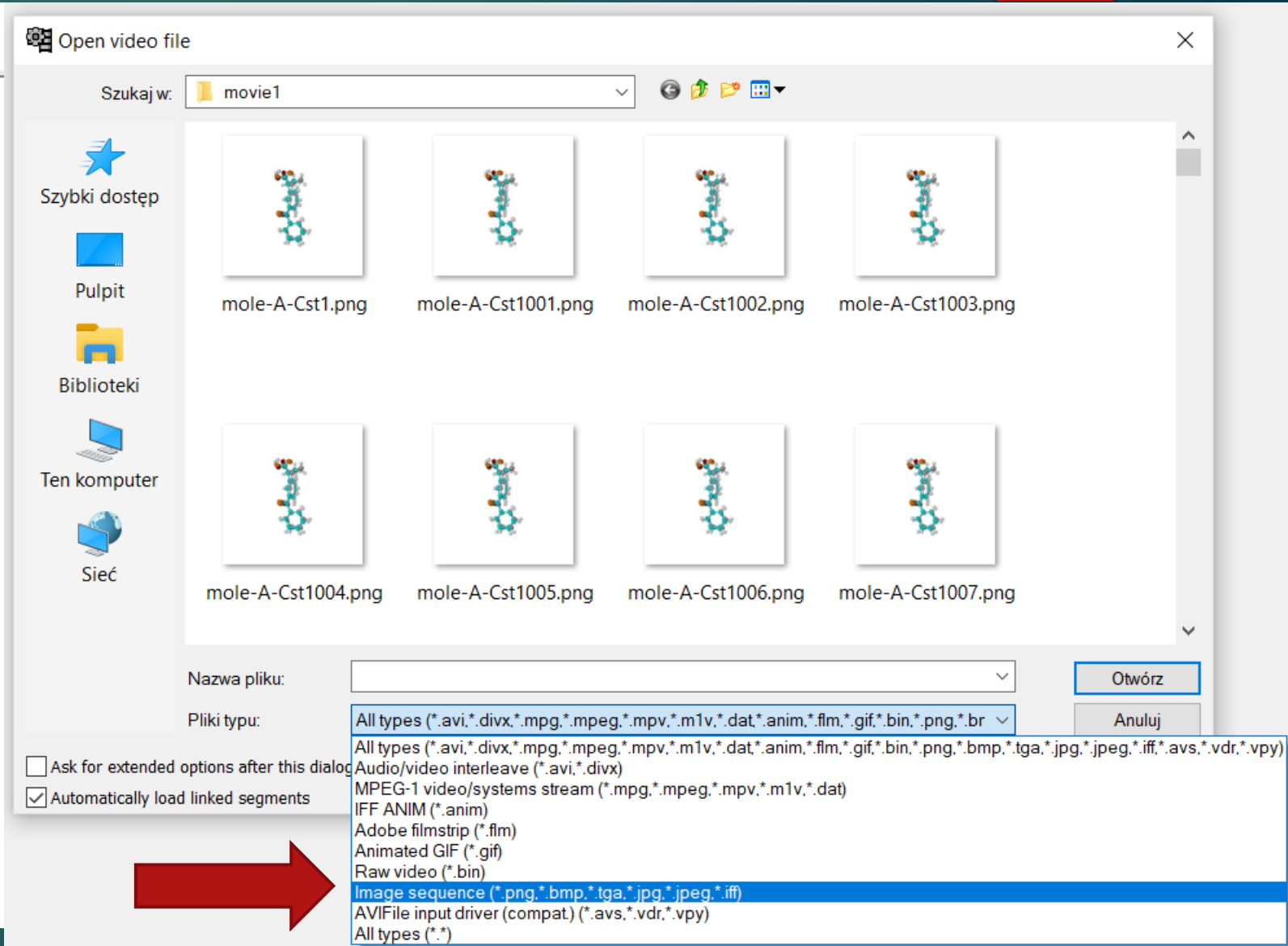
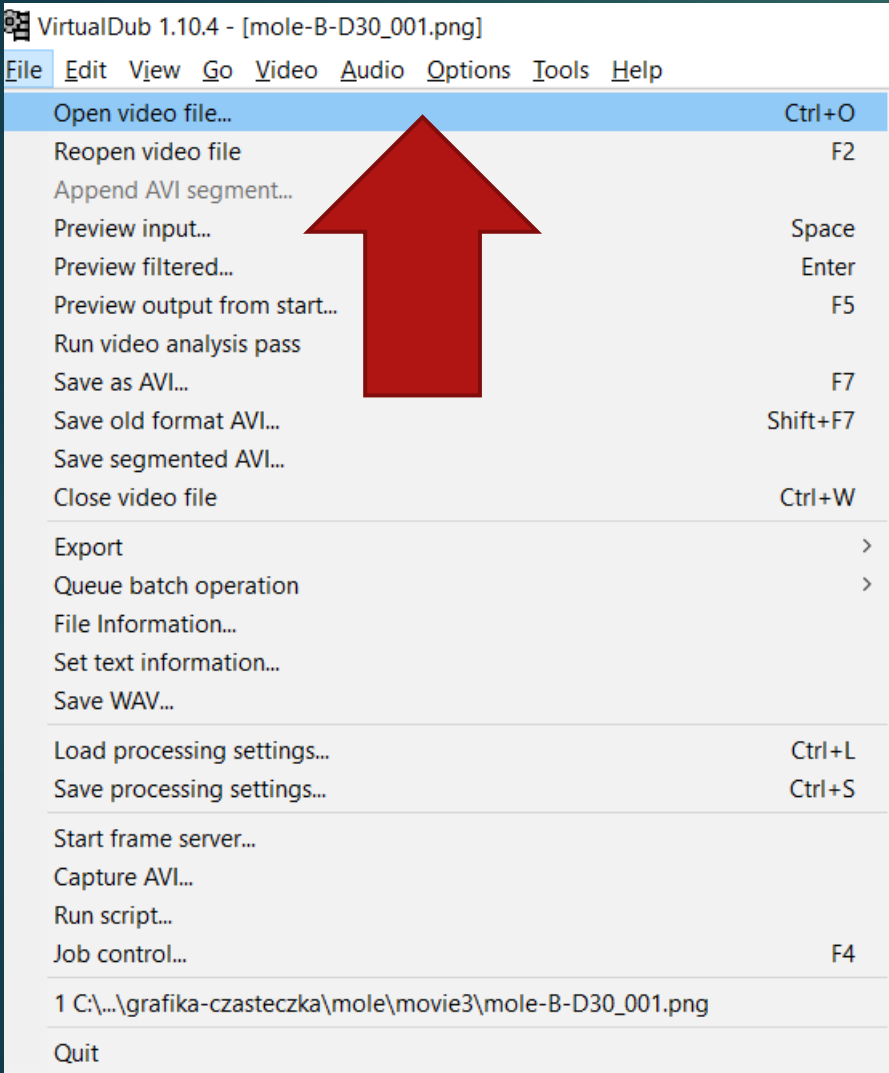
# Składanie filmu z klatek w VirtualDub

JAKO „KLATKI” MOGĄ BYĆ ZDJĘCIA

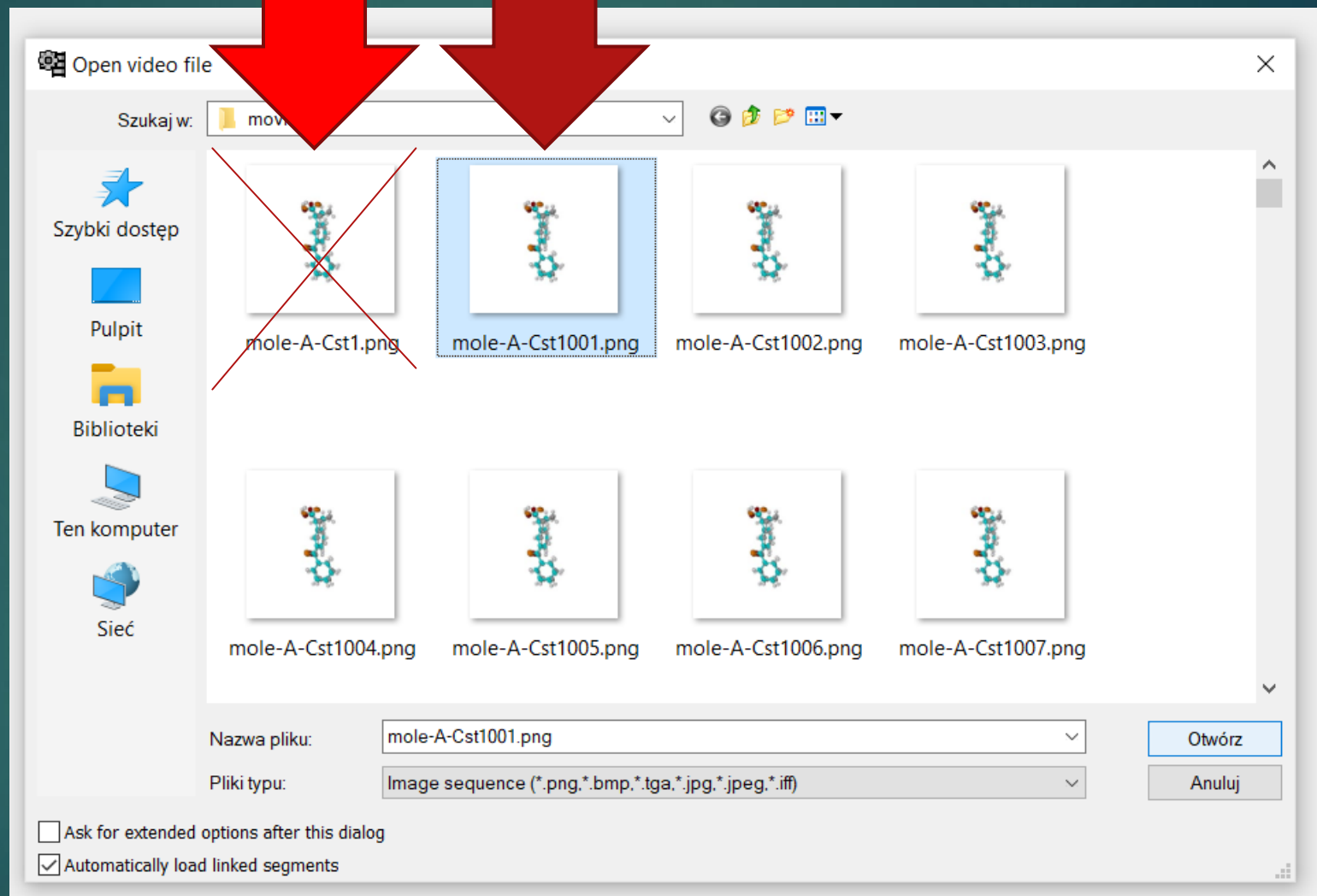
LUB WYGENEROWANE WCZEŚNIEJ OBRAZY W INNYM OPROGRAMOWANIU.

W PREZENTACJI UŻYŁEM OBRAZÓW CZĄSTECZKI STRUKTURY KRYSTALOGRAFICZNEJ.

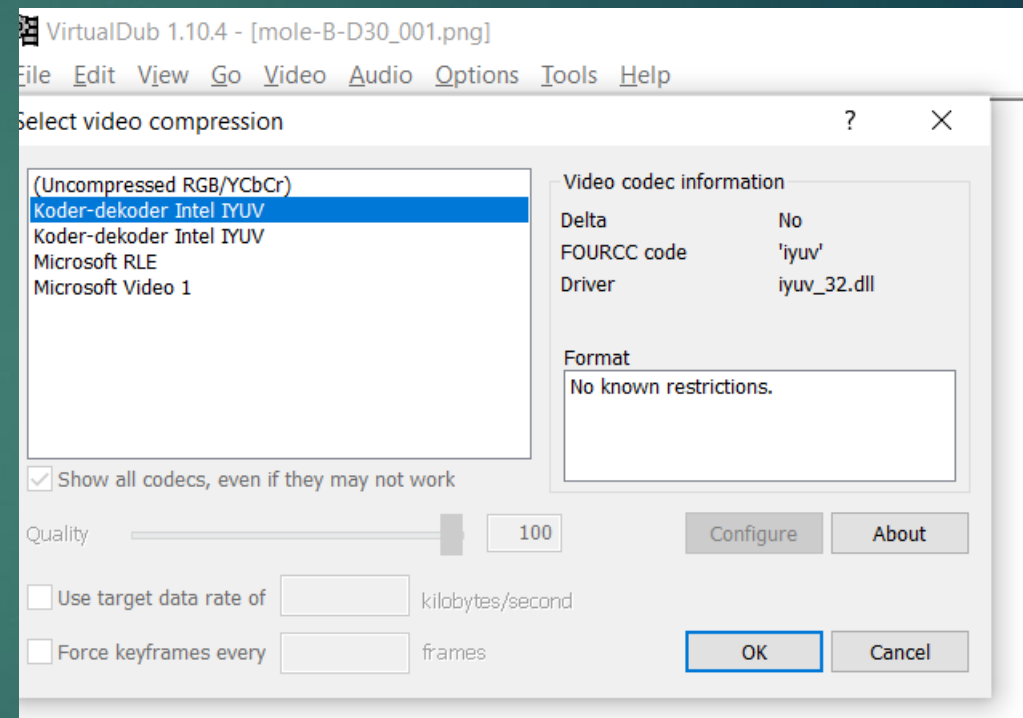
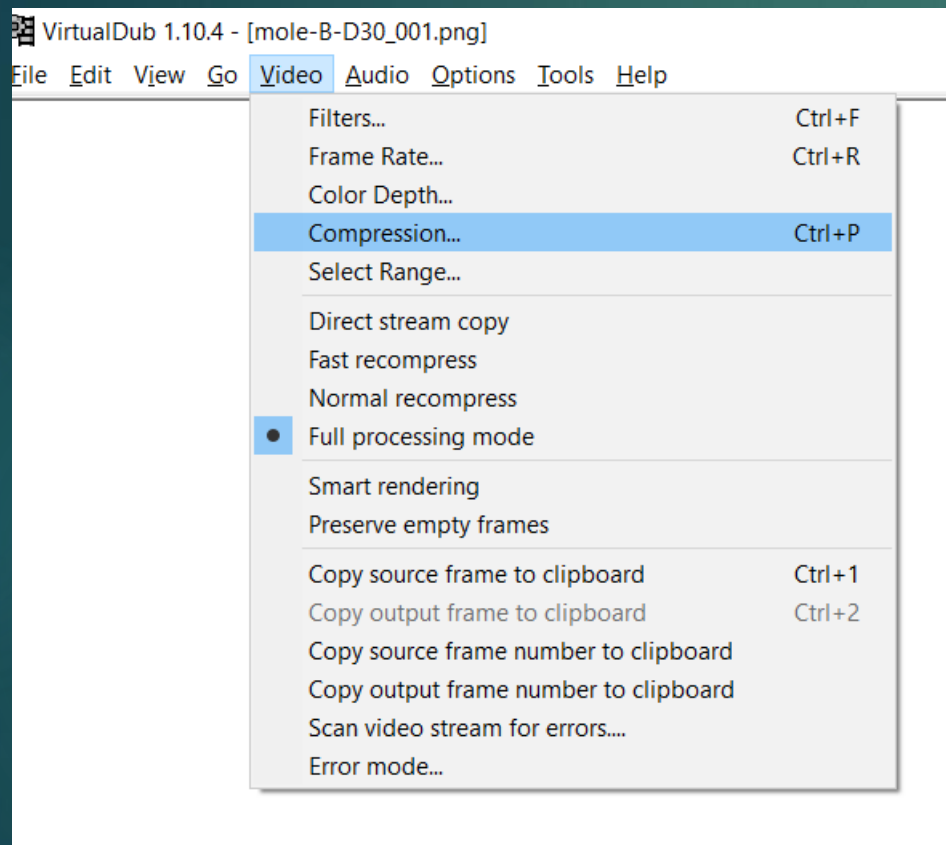
# Wczytanie plików – obrazów „klatek”



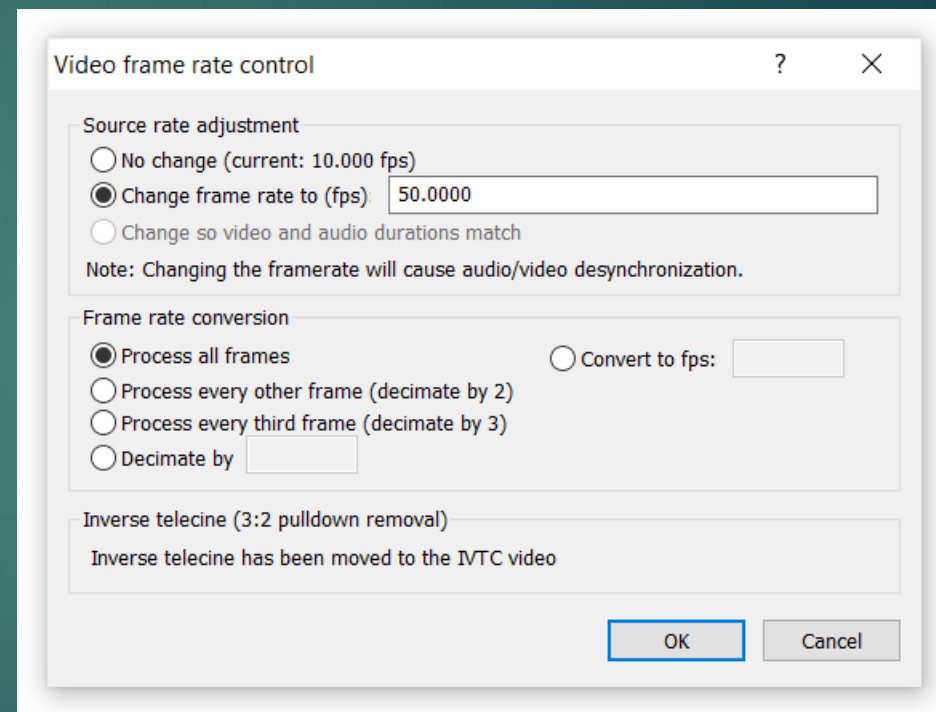
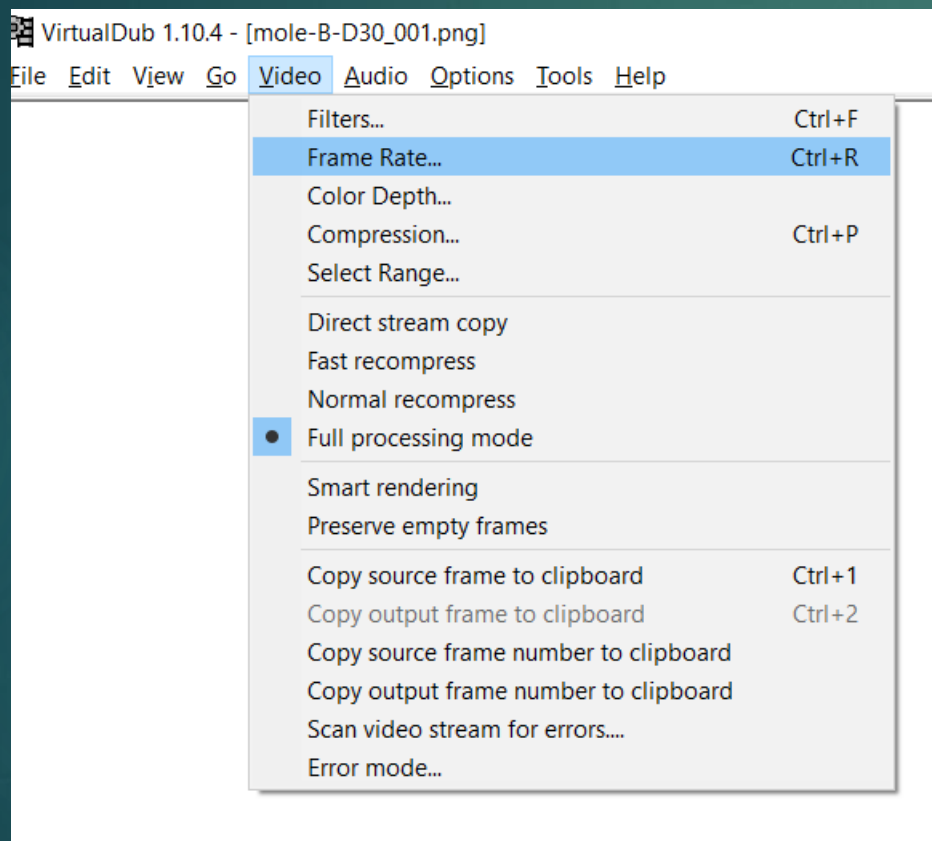
Musi być kolejna rosnąca numeracja plików z obrazami



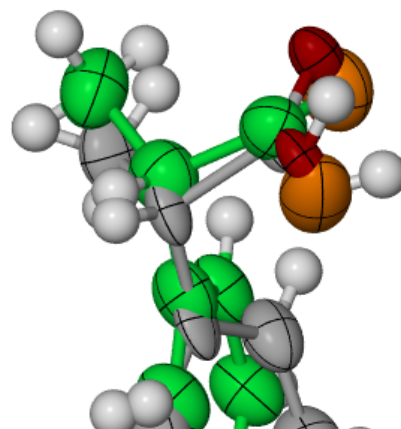
# Przykładowa konfiguracja kompresji pliku wideo



# Definiujemy ilość klatek na sekundę. Sugeruję 25klatek/s, tu jest 50klatek/s.



- Filters... Ctrl+F
- Frame Rate... Ctrl+R
- Color Depth...
- Compression... Ctrl+P
- Select Range...
- Direct stream copy
- Fast recompress
- Normal recompress
- Full processing mode
- Smart rendering
- Preserve empty frames
- Copy source frame to clipboard Ctrl+1
- Copy output frame to clipboard Ctrl+2
- Copy source frame number to clipboard
- Copy output frame number to clipboard
- Scan video stream for errors....
- Error mode...



k „przyciąć film”

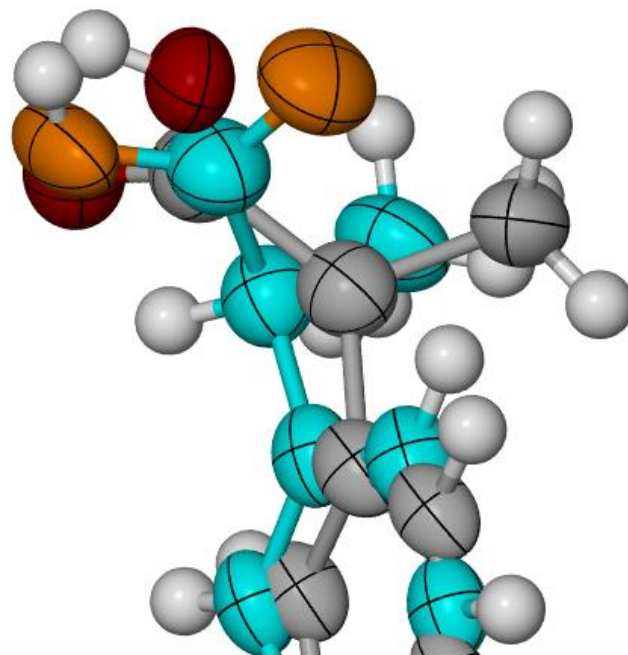
braz i pozbyć się niepotrzebnego białe

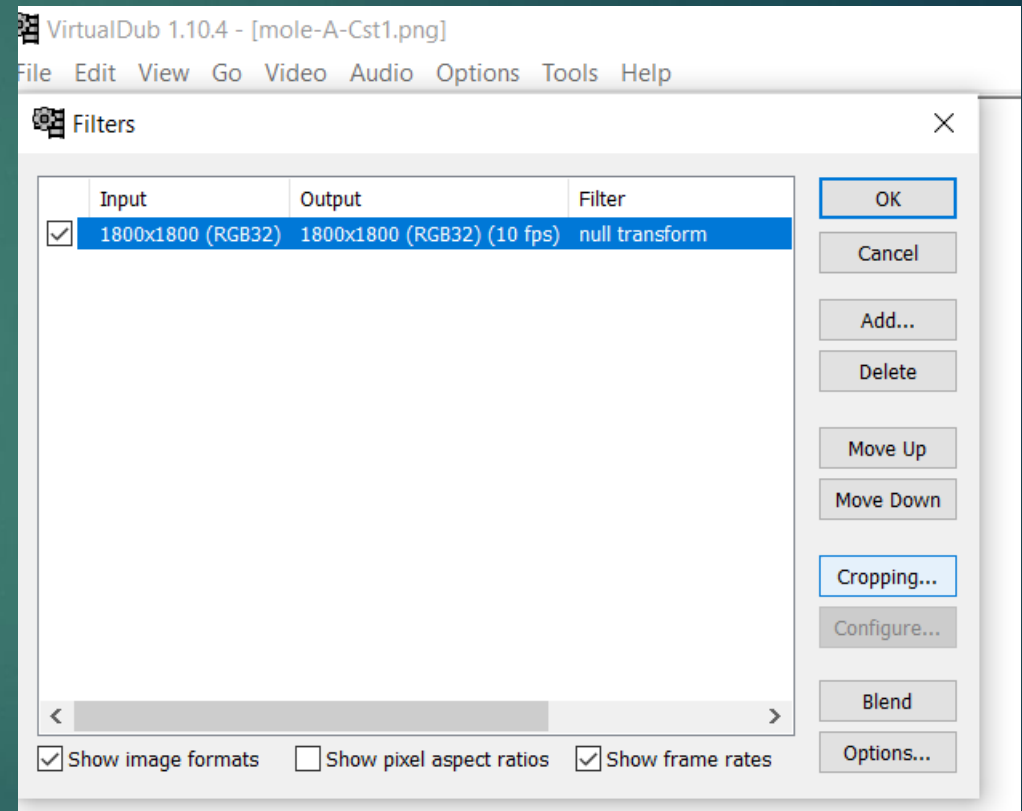
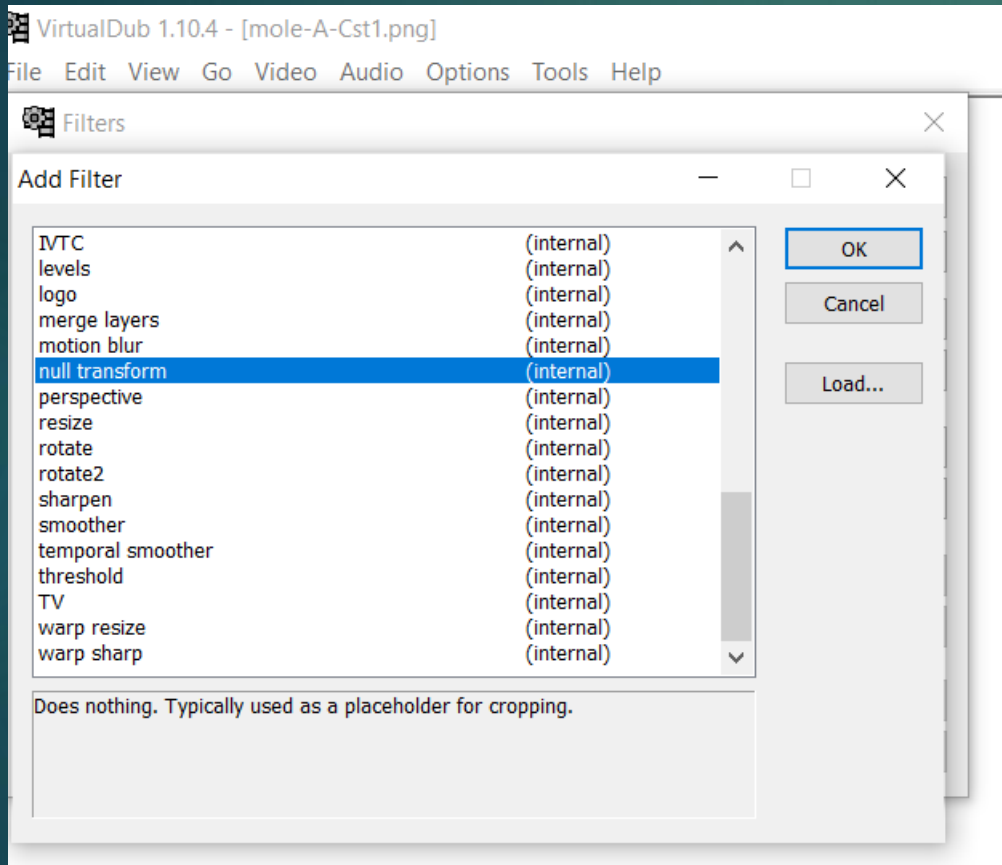
Filters

Input Output Filter

OK  
Cancel  
Add...  
Delete  
Move Up  
Move Down  
Cropping...  
Configure...  
Blend  
Options...

Show image formats    Show pixel aspect ratios    Show frame rates





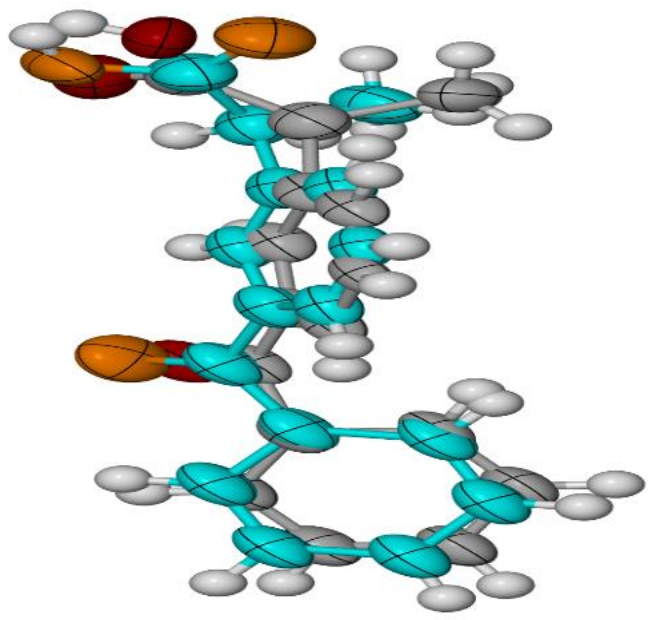


X1 offset 600

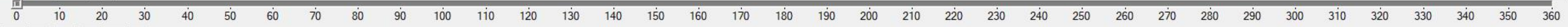
X2 offset 600

Y1 offset 350

Size  
600x1150



Y2 offset 300



Navigation icons: Home, Previous, Next, End, and a frame counter showing "Frame 0 (0:00:00.000)".

YCbCr crop mode:  Precise  Fast

OK Cancel

# Zapisanie filmu na dysk

File	Edit	View	Go	Video	Audio	Options	Tools	Help
Open video file...								Ctrl+O
Reopen video file								F2
Append AVI segment...								
Preview input...								Space
Preview filtered...								Enter
Preview output from start...								F5
Run video analysis pass								
Save as AVI...								F7
Save old format AVI...								Shift+F7
Save segmented AVI...								
Close video file								Ctrl+W
Export								>
Queue batch operation								>
File Information...								
Set text information...								
Save WAV...								
Load processing settings...								Ctrl+L
Save processing settings...								Ctrl+S
Start frame server...								
Capture AVI...								
Run script...								
Job control...								F4